

# CANYON RIDGE®

collection

LIMITED EDITION SERIES | ULTRA-GRAIN® SERIES



America's Favorite Garage Doors®



*Canyon Ridge® Collection Limited Edition Series Design 13; Shown in Dark Finish with Mahogany Cladding, Mahogany Overlays and REC13 Window Design (Model CAN213MMREC13)*

# CANYON RIDGE® collection

Clopay offers a complete portfolio of design options for homeowners who love the look of wood, but not the upkeep.

Constructed in durable, low-maintenance steel and composite, these faux wood alternatives offer the best of both worlds – the realism and beauty of a natural stained wood appearance combined with the strength and energy efficiency of insulated steel.

Clopay's extensive selection of faux overlays, designs, windows, decorative hardware and finish colors can complement any home style and budget.



## Limited Edition Series

This time-tested, carriage-house design meets the modern strength of steel and composite, providing a warm authentic look and high durability.



## NEW Limited Edition Louver Designs

Perfect for coastal beach homes to colonial estates. These plantation shutter inspired designs are a perfect accent piece.



## Ultra-Grain® Series

Low-maintenance Ultra-Grain® steel is covered with a composite overlay, molded from actual wood pieces for a natural look.



Canyon Ridge® Collection Ultra-Grain® Series Design 12; Shown in Medium Finish with Clear Cypress Overlays and REC14 Window Design (Model CAN212NCREC14)

# intell<sup>icore</sup>®

insulation technology

## Warmer. Quieter. Stronger.

Canyon Ridge® Collection doors featuring Intellicore® insulation technology represent the ultimate smart choice for homeowners. Clopay's Intellicore® is a proprietary polyurethane foam that is injected into a garage door, expanding to fill the entire structure. The result is a door with incredible strength and durability. Its dense insulation also produces a quieter door, while its industry-leading R-values (up to 20.4) provide year-round comfort and improved energy efficiency.



## WARMER

Energy efficiency provides year-round comfort



## QUIETER

Dense insulation reduces noise by up to 16 decibels



## STRONGER

Enhanced strength resists everyday wear and tear



Canyon Ridge® Collection Limited Edition Series Design 11; Shown Custom Painted with Clear Cypress Cladding, Clear Cypress Overlays and REC14 Window Design (Model CAN211CCREC14)

## LIMITED EDITION SERIES

## 5-LAYER CONSTRUCTION

Canyon Ridge® Collection Limited Edition Series doors are constructed of an energy efficient, durable steel core and finished with full composite cladding and overlays that have the appearance of authentic wood doors.

The cladding and overlay materials are molded from actual wood pieces to reproduce the natural texture and intricate grain patterns of the species they emulate. These two layers are attached to an Intellicore® polyurethane insulated steel door for added strength and energy efficiency. Louver cladding available on Series 5 door designs.



Louver Mahogany Cladding Detail



- 1 Composite Overlay
- 2 Composite Cladding
- 3 Steel
- 4 2" Intellicore® Polyurethane Insulation
- 5 Steel



**2"**  
POLYURETHANE  
INSULATION

COMPOSITE OVERLAY  
DELAMINATION  
**LIMITED  
5YR  
WARRANTY**

EFFICIENCY  
**20.4**  
R-VALUE

HARDWARE  
**LIMITED  
5YR  
WARRANTY**

Canyon Ridge® Collection not applicable for new construction in California areas designated as "Fire Hazard Severity Zones".

Calculated door section R-value is in accordance with DASMA TDS-163.

## MATERIAL DESIGN OPTIONS

### Composite Cladding Materials



### Composite Overlay Materials



*Note: Cladding and overlay material options may be mixed and matched.*

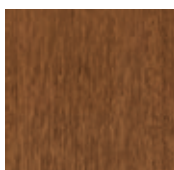


*Canyon Ridge® Collection Limited Edition Series Design 54; Shown in Black Finish with Louver Mahogany Cladding and Mahogany Overlays (Model CAN254LM)*

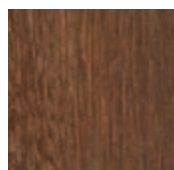
## COLORS



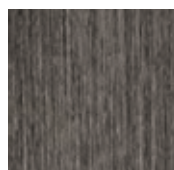
Medium Finish



Dark Finish



Walnut Finish



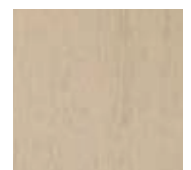
Slate Finish



Black Finish



Whitewash Finish



Primed (No Finish)

*Cladding and overlays are finished in the same color. Black and Whitewash Finish available only on Mahogany cladding and overlays. Doors can be ordered Primed for those homeowners wishing to custom paint or stain their doors. Door stain color will vary slightly within a door due to finishing process. Due to the printing process, above colors may vary.*

DOOR DESIGNS

SERIES 1



Design 01



Design 11



Design 12



Design 13

SERIES 2



Design 21



Design 22



Design 23

SERIES 3



Design 31



Design 32



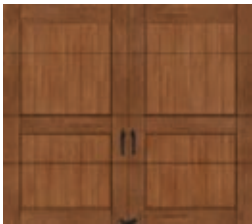
Design 33



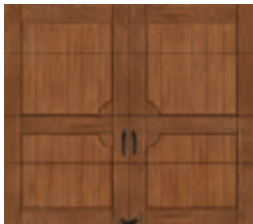
Design 34



Design 35



Design 36



Design 37



Design 38

SERIES 5



Design 51



Design 52



Design 53



Design 54



Design 55

Door widths available 6'2" to 20'0" wide in 2" increments. Designs 22, 23, 34 and 35 are not available 10'2" to 14'10" wide.  
Door heights available 6'0" to 10'0" high in 3" increments. 6'3" high doors are not available with windows. See your Clopay Dealer for details.

## WINDOW DESIGNS / TOP SECTIONS

Top sections are available in solid panels or with insulated windows in rectangular, square and arched designs. Insulated frosted, seeded, obscure and rain glass is available. Glass available only on Series 1, Series 2 and Design 52.

*Additional charges for optional glass apply.*



Clear



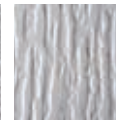
Frosted



Seeded



Obscure



Rain



*Attractive beveled edge clip-in grilles are removable for easy cleaning.*

## SERIES 1 & 2

### Solid Top Sections Not Applicable to Design 01 and Series 3



TOP11\*



TOP12



TOP13



ARCH1

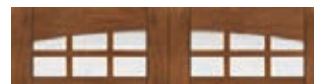
### Window Designs Not Applicable to Design 01 and Series 3



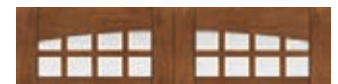
REC11\*



ARCH1



ARCH3



ARCH4



REC13\*



REC14\*



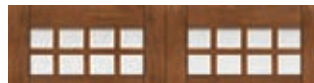
ARCH13



ARCH14



SQ23\*



SQ24\*

\*Top section and windows also available on Series 5 Design 52.  
Window grilles are Clear Cypress texture.

## SERIES 3

### Solid Top Sections Not Applicable to Series 1 and 2



TOP11



TOP12



TOP13



ARCH1



ARCH1



ARCH1

ARC1A, ARC3A and ARC4A double door top sections not shown. See below for more information on additional sizes or ask your Clopay Dealer for more details.

## ADDITIONAL SIZES & WINDOWS

Due to the extensive design options, not all sizes, window and top sections are shown.

See your Clopay Dealer or go to [www.clopaydoor.com](http://www.clopaydoor.com) for more details.

ARCH1 WINDOWS



10'4" – 14'10" WIDE DOORS

ARC1A WINDOWS



15'0" – 20'0" WIDE DOORS

ARCH1 WINDOWS





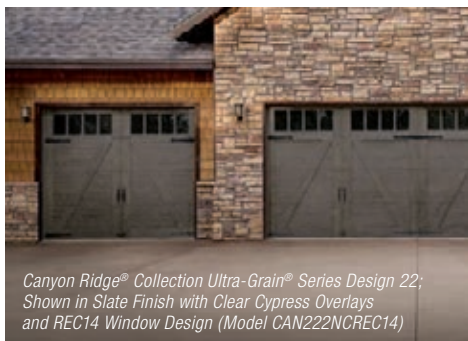
# CLASSIC and REFINED.

Canyon Ridge® Collection Ultra-Grain® Series Design 11; Shown in Walnut Finish with Clear Cypress Overlays and REC13 Window Design (Model CAN211NCREC13)

## ULTRA-GRAIN® SERIES

## 4-LAYER CONSTRUCTION

An attractive and more economical alternative to the Limited Edition Series, this door features a 2" Intellicore® polyurethane insulated steel base door with Ultra-Grain®, a durable, natural-looking, woodgrain paint finish. Stained Clear Cypress composite overlays are applied to the steel door surface to create beautiful carriage house designs.



Canyon Ridge® Collection Ultra-Grain® Series Design 22; Shown in Slate Finish with Clear Cypress Overlays and REC14 Window Design (Model CAN222NCREC14)



- 1 Composite Overlay
- 2 Steel with Ultra-Grain® Paint Finish
- 3 2" Intellicore® Polyurethane Insulation
- 4 Steel



**2"**  
POLYURETHANE  
INSULATION

**EFFICIENCY**  
**18.4**  
R-VALUE

STEEL  
PAINT SYSTEM  
**LIMITED  
LIFE  
WARRANTY**

COMPOSITE OVERLAY  
DELAMINATION  
**LIMITED  
5YR  
WARRANTY**

HARDWARE  
**LIMITED  
5YR  
WARRANTY**

Canyon Ridge® Collection not applicable for new construction in California areas designated as "Fire Hazard Severity Zones".

Calculated door section R-value is in accordance with DASMA TDS-163.



# MATERIAL DESIGN OPTIONS

Ultra-Grain®  
Steel Base Door



*Note: Cladding is not present on  
Ultra-Grain® Series Models.*

*N = No cladding.*

Composite  
Overlay  
Material



*Canyon Ridge® Collection Ultra-Grain® Series Design 36; Shown in Medium Finish with Clear Cypress Overlays and TOP11 (Solid) Top Section (Model CAN236NCTOP11)*

# COLORS



Ultra-Grain® Cypress  
Medium Finish



Ultra-Grain® Cypress  
Walnut Finish



Ultra-Grain® Cypress  
Slate Finish

*Composite overlays and window grilles are finished in the same color as the Ultra-Grain® base door.  
Door stain color will vary slightly within a door due to finishing process.  
Due to the printing process, above colors may vary.*

DOOR DESIGNS

SERIES 1



Design 11



Design 12



Design 13

SERIES 2



Design 21



Design 22



Design 23

SERIES 3



Design 31



Design 32



Design 33



Design 34



Design 35



Design 36



Design 37



Design 38

Door widths available 6'2" to 20'0" wide in 2" increments. Designs 22, 23, 34 and 35 are not available 10'2" to 14'10" wide.  
Door heights available 6'0" to 10'0" high in 3" increments. 6'3" high doors are not available with windows. See your Clopay Dealer for details.

## WINDOW DESIGNS / TOP SECTIONS

Top sections are available in solid panels or with insulated windows in rectangular, square and arched designs. Insulated frosted, seeded, obscure and rain glass is available. Glass available on Series 1 and 2 only.

*Additional charges for optional glass apply.*



Clear



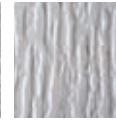
Frosted



Seeded



Obscure



Rain



*Attractive beveled edge clip-in grilles are removable for easy cleaning.*

## SERIES 1 & 2

### Solid Top Sections Not Applicable to Series 3



TOP11



TOP12



TOP13



ARCH1

### Window Designs Not Applicable to Series 3



REC11



ARCH1



ARCH3



ARCH4



REC13



REC14



ARCH13



ARCH14



SQ23



SQ24

*Window grilles are Clear Cypress texture.*

## SERIES 3

### Solid Top Sections Not Applicable to Series 1 and 2



TOP11



TOP12



TOP13



ARCH1



ARCH1



ARCH1

*ARC1A, ARC3A and ARC4A double door top sections not shown. See below for more information on additional sizes or ask your Clopay Dealer for more details.*

## ADDITIONAL SIZES & WINDOWS

Due to the extensive design options, not all sizes, window and top sections are shown.

See your Clopay Dealer or go to [www.clopaydoor.com](http://www.clopaydoor.com) for more details.

ARCH3 WINDOWS



ARC3A WINDOWS



ARCH3 WINDOWS



10'4" – 14'10" WIDE DOORS

15'0" – 20'0" WIDE DOORS

## DESIGNING YOUR DOOR

Use the information below to select the appropriate model number.

### CANYON RIDGE® LIMITED EDITION SERIES

Canyon Ridge Door   Insulation Thickness\*   Design   Cladding Material †   Overlay Material †   Window Design/Top Section

**CAN 2 13 P C REC13**

\* 2 = 2" Polyurethane. † See cladding and overlay design options.

### CANYON RIDGE® ULTRA-GRAIN® SERIES

Canyon Ridge Door   Insulation Thickness\*   Design   Cladding Material (Does Not Apply)   Overlay Material †   Window Design/Top Section

**CAN 2 13 N C REC13**

\* 2 = 2" Polyurethane. † See overlay design options.

## FINISHING AND CARE

Proper care and maintenance are imperative for long-term performance and appearance of Canyon Ridge® Collection doors. Periodic inspection and maintenance of the composite cladding and overlays are required. Minor expansion and contraction is normal for exterior building materials exposed to direct sunlight and is not considered a defect. Complete finishing and maintenance instructions are provided with the door and are also available from your Clopay Dealer or online at [www.clopaydoor.com](http://www.clopaydoor.com)

## ENVIRONMENTAL ASSURANCE

Clopay doors are compliant with environmental laws and regulations. Clopay doors do not contain HFCs. All Clopay doors are compliant with:

- California SB 1013
- Washington HB 1112 – Hydrofluorocarbon Greenhouse Gas Emissions
- Canadian regulations amending the ozone-depleting substances and halocarbon alternatives regulations

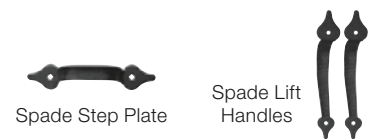
## ADDITIONAL FEATURES

- Replaceable vinyl bottom weatherseal in a rust-resistant aluminum retainer helps seal out the elements.
- 10-ball nylon rollers for quiet operation.
- Heavy-duty 14 gauge steel hinges for long-lasting performance.
- Patented Safe-T-Bracket® prevents serious injury that could occur if the bottom bracket were removed with the garage door closed and under tension.
- Product complies with 2015 IECC air infiltration requirement of 0.40 cfm/ft² or less (IECC, Section C402.5.2).

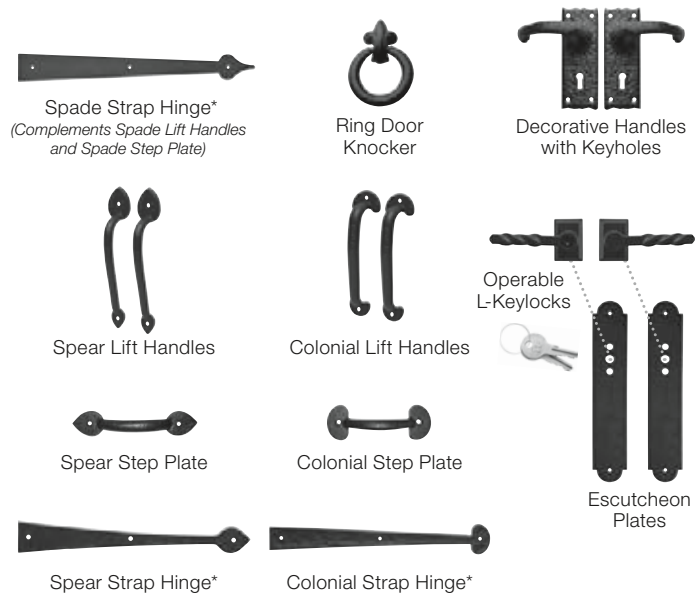
## DECORATIVE HARDWARE

Attractive black powder coated grip handles and step plates are provided standard to further enhance the carriage house design. Optional antique black iron hardware, including handles, operable L-keylocks and strap hinges, are available to provide the look of a classic carriage house door.

### STANDARD



### OPTIONAL



\*Door may not open properly if installed near the top depending on opening dimensions and lift type. See your Clopay Dealer for more details.



For more detailed product specification information or availability of our Canyon Ridge® Collection Garage Doors, please contact your Clopay Dealer. To locate a dealer to help you select the right door for your home, just go to [www.clopaydoor.com/dealer](http://www.clopaydoor.com/dealer) or call 1-800-2CLOPAY (225-6729).

Follow us on        



MADE IN USA

©2019 Clopay Corporation. All rights reserved.

RSDR-CANYONRIDGESS-12\_REV1019